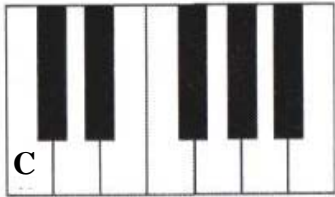


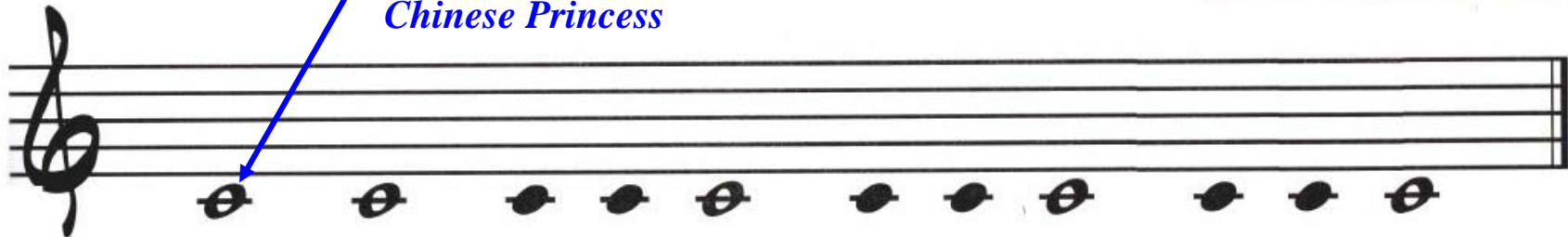
ON THE KEYBOARD:



Chinese Princess

Note Middle C

ON THE STAFF:



This is note middle C, note middle C, note middle C!
I know note middle C, note middle C, note middle C!

Middle C is a *Chinese Princess* note. It sits on the short (ledger) line *below the staff*.

Assignments:

- 1) Find all notes C on the keyboard (in both high and low registers);
- 2) Add *stems* to the notes C on the staff above. Which *note values* did you get? _____ and _____
- 3) Add the *time signature* 4/4 after treble clef; then add the *bar lines*. How many *measures* did you get?

- 4) Clap and count the song you just created; write the counts above the notes;
- 5) Play the *note middle C* on the keyboard; use finger 2, R.H., for the first time, and finger 3, R.H., for the second time.